

# MASTER-LEE ENGINEERED PRODUCTS INC.



## LED PORTABLE LIGHTING INDEX

*(for in-air and underwater maintenance and refueling services)*

**Area Lights**

**Cavity/SFP Floodlights**

**CoreLite**

**Small Diameter PenciLite**

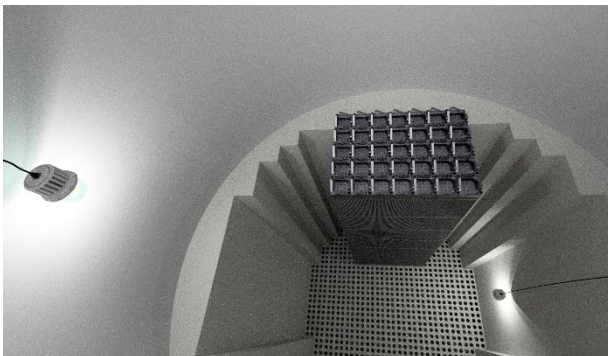
# MASTER-LEE ENGINEERED PRODUCTS INC.

*The Master-Lee Engineered Products (MEPI) LED Helios-75K AreaLite is our most versatile product, engineered to operate in the extremes.*



LED Helios-75K AreaLite  
P/N #D3346

Providing up to **78,000 lumens** of dispersed, white light using the latest LED technology, the **Helios 75K™ AreaLite** is best suited for lighting the reactor core in support of fuel movement and video inspection services operations. The **Helios 75K™ AreaLite** has been engineered to be **compact, lightweight, rugged**, and is equipped with a detachable cable for simple storage. The ease of positioning the light and its intense light output permits fewer moves during critical path times, ultimately **saving time**. Designed to operate at **depths to 100-ft** and within close proximity to irradiated fuel assemblies, the **Helios 75K™ AreaLite** is the ideal solution to **illuminate reactor cores**. Providing a bright, reliable light source gives our customers the flexibility to do more with less, as the **Helios 75K™ AreaLite** can provide the illumination of two or more traditional (tungsten/quartz halogen) lights. Additionally, incorporating LED lighting technology provides **thousands of operating hours**, reducing your re-lamp, installation, and removal times. Maintenance is limited to replacement of the lens as required due to radiation exposure.



Master-Lee would like to introduce our most versatile model of the Helios-75K line, the **Helios 75K™ AreaLite**. Designed to be as powerful as a large floodlight, but compact and rugged enough to play the role of an area light, the **Helios 75K™ AreaLite** shines brightly in any environment. **In-air or underwater**, this **dimable** LED light offers more than enough light for illuminating large areas.

*The **Helios 75K AreaLite** weighs just 15 pounds (5 pounds in water) for easy, manual installation/removal by its strain-relief detachable cable.*



*For additional information  
contact MEPI at:*

**800/537 6007-724/537 6002**

**FAX 724/805 0079**

**MEPI**

**5631 Route 981**

**Latrobe, PA 15650**

[www.masterlee.com](http://www.masterlee.com)

[Mepi-sales@masterlee.com](mailto:Mepi-sales@masterlee.com)

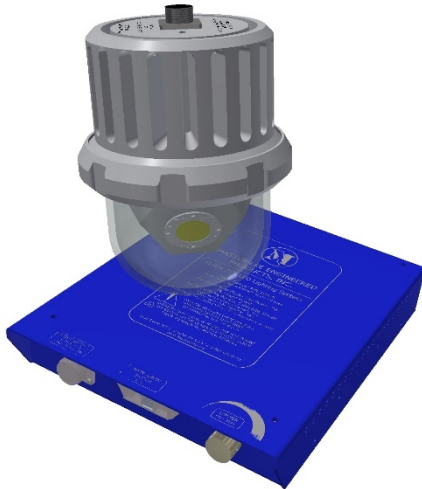


H  
e  
l  
i  
o  
s  
  
7  
5  
K  
  
A  
r  
e  
a  
L  
i  
t  
e

# MASTER-LEE ENGINEERED PRODUCTS INC.

## *LED Helios 75K AreaLite Technical Specifications*

### Part Number D3346 – Helios 75K AreaLite System



#### Physical – Light Head

Part Number	D3347
Length	9 in
Diameter	7 in
Width	3 in
Weight	15 lb
Material	Hardcoat anodized aluminum
Lens Material	Polycarbonate

#### Physical – Detachable Cable

Length	100-ft
Shielded	Yes
Water resistance	Yes; to 2500 PSI
Jacket Material	Polyurethane, low-smoke, zero-halogen

#### Lighting/Electrical

Operating Voltage	90~305 VAC, 50~60Hz
Current @ 100% Power	Up to 5.0 Amps
Size/Weight (Power Console)	13" x 11" x 3"; 12 lb
Light Output	Up to 78,000 Lumens
Light Color Temperature	5000K (white light)
LED Life	50,000 hours (>70% lumen output)
Radiation tolerance	Approved for extended use in Reactor Core & near fuel assemblies
Waterproof depth rating	100-ft
Dimming	100-10% manual; 100-40% auto (temperature based)
Light Panel positions	Vertical hanging
Operating temperature (°F)	165 (max. in-air); ~135 (in water)
Power Factor %	98
LED Efficacy (@ 85C)	152 lumens/watt
LED Flux (@85C)	70,900 lumens
FME Equipped	Yes
Protection	Thermal Overload; Short Circuit; Over Voltage; Fuse
Warranty	2-Year; Limited; Parts replacement



# MASTER-LEE ENGINEERED PRODUCTS INC.

## *The Master-Lee Engineered Products (MEPI) LED Floodlight - Apollo 100K*



*LED Floodlight – Apollo 100K  
P/N #D2959*

Master-Lee would like to introduce our brightest, most powerful LED light across our product line, the **Apollo 100K**.

Versatility was the core design intent with focus on efficient operability submerged in water as well as in open air environments. The **Apollo 100K** has been designed to operate across numerous industrial applications, such as: **commercial nuclear power, marine, sub-sea, transportation, construction, etc.**

The **Apollo 100K** provides up to 110,000 lumens of dispersed, white light using the latest in LED technology. With a wide beam array of light, positioning the **Apollo 100K** just below the water's surface is all that's required to illuminate large surfaces for underwater video inspections/monitoring, reactor service and fuel pool work, or general area lighting. Such a high light output gives our customers the flexibility to do more with less, as the **Apollo 100K** can **provide the illumination of two or more traditional (tungsten/quartz halogen) lights**. Incorporating LED lighting technology provides thousands of maintenance-free operating hours, reducing your re-lamp, installation, and removal times.

**Fully dimmable** from 100% output to 10% power gives the end user total control allowing the light to perform exactly as needed. If it's not the user adjusting light output based on conditions, it's the conditions adjusting light output. The **Apollo 100K** incorporates a unique safety feature, **Auto-Dimming**, to protect itself from thermal overload. When the **Apollo 100K** is removed from water, its primary cooling medium, its operating temperature begins to rise. As this occurs, it senses the temperature increase and begins to lower its light output to maintain a safe operating level.

*The **Apollo 100K** has an adjustable (0-45 degrees) mounting bracket and weighs under 50 pounds (15 pounds in water) for easy, manual installation/removal.*



*For additional information  
contact MEPI at:*

**800/537 6007-724/537 6002**

**FAX 724/805 0079**

**MEPI**

**5631 Route 981**

**Latrobe, PA 15650**

[www.masterlee.com](http://www.masterlee.com)

[Mepi-sales@masterlee.com](mailto:Mepi-sales@masterlee.com)

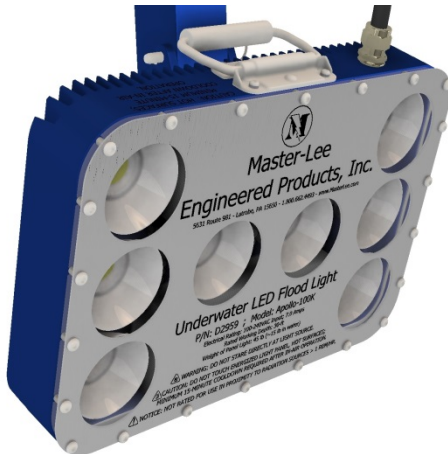


A  
P  
O  
L  
L  
O  
  
1  
0  
0  
K  
  
F  
L  
O  
O  
D  
L  
I  
G  
H  
T

# MASTER-LEE ENGINEERED PRODUCTS INC.

## *LED Floodlight – Apollo 100K Technical Specifications*

### Part Number D2959 – Apollo 100K Light and Power Supply Package



#### Physical – Panel Light

Part Number	D2960
Length	18 in
Height	12 in
Width	3 in
Weight	36 lb
Cable Length	Up to 100 ft
Material	Aluminum; Stainless steel protective lens cover
Lens Material	Polycarbonate

#### Physical – Panel Mounting Bracket

Length	6 in
Width	4 in
Height	12 in
Weight	5 lb
Material	Aluminum

#### Lighting/Electrical

Operating Voltage	100~240 VAC, 50~60Hz
Current @ 100% Power	Up to 7.0 Amps
Light Output	Up to 110,000 Lumens
Light Color Temperature	5000K (white light)
LED Life	50,000 hours (>70% lumen output)
Radiation tolerance	Not approved for high-radiation exposure (See Helios product line)
Waterproof depth rating	IP68; 30-ft
Dimming	100-10% manual; 100-50% auto (temperature based)
Light Panel positions	0-45 degrees (down from horizontal)
Operating temperature (°F)	165 (max. in-air); ~135 (in water)
Power Factor %	98
LED Efficacy (@ 85C)	159 lumens/watt
LED Flux (@85C)	100,300 lumens
FME Equipped	Yes
Protection	GFCI; Thermal Overload; Short Circuit; Over Voltage
Warranty	2-Year; Limited; Parts replacement
Cable Material	Polyethylene; Water resistant



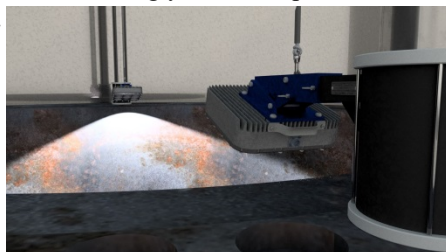
# MASTER-LEE ENGINEERED PRODUCTS INC.

*The Master-Lee Engineered Products (MEPI) LED Floodlight – Helios 100K*



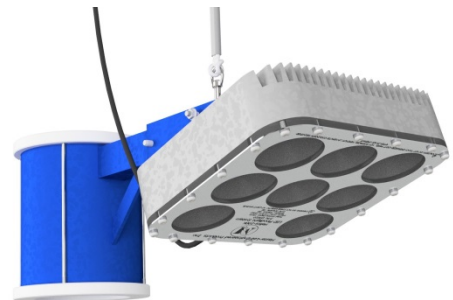
*LED Floodlight – Helios 100K  
P/N #D3010*

Providing up to **110,000 lumens** of dispersed, white light using the latest in LED technology, the **Helios 100K™** is best suited for lighting large **underwater** areas, such as reactor cores and spent fuel pools, or **in-air** areas such as refueling cavities. Designed to operate at **depths to 100-ft** and within close proximity to irradiated fuel assemblies, the **Helios 100K™** is the ideal solution to **illuminate reactor cores** for video inspections or fuel movement. Used in conjunction with our Guide Stud Mounting Kits, two **Helios 100K™** systems will brightly illuminate a reactor core all the way to the core plate. Such a high light output gives our customers the flexibility to do more with less, as the **Helios 100K™** can provide the illumination of two or more traditional (tungsten/quartz halogen) lights. This not only reduces the amount of required electrical outlets, as two **Helios 100K™** lights operate on one 15-Amp circuit, but also the amount of time spent positioning lights within the core is reduced. Additionally, incorporating LED lighting technology provides **thousands of maintenance-free operating hours**, reducing your re-lamp, installation, and removal times.



Master-Lee would like to introduce our brightest, **high-radiation tolerant** LED light across our product line, the **Helios 100K™**. Versatility was the core design trait with focus on efficient operability submerged in water as well as in open air environments. The **Helios 100K™** has been designed to operate across numerous industrial applications, such as: commercial nuclear power, marine, sub-sea, transportation, construction, etc.

*The **Helios 100K** has an adjustable (0-45 degrees) mounting bracket and weighs under 25 pounds (10 pounds in water) for easy, manual installation/removal.*



*For additional information  
contact MEPI at:*

**800/537 6007-724/537 6002**

**FAX 724/805 0079**

**MEPI**

**5631 Route 981**

**Latrobe, PA 15650**

[www.masterlee.com](http://www.masterlee.com)

[Mepi-sales@masterlee.com](mailto:Mepi-sales@masterlee.com)



H  
E  
L  
I  
O  
S  
  
1  
0  
0  
K  
  
F  
L  
O  
O  
D  
L  
I  
G  
H  
T

# MASTER-LEE ENGINEERED PRODUCTS INC.

## *LED Floodlight – Helios 100K Technical Specifications*

### **Part Number D3010 – Helios 100K Light and Power Console Package**



#### **Physical – Panel Light**

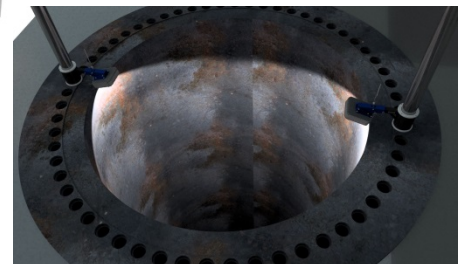
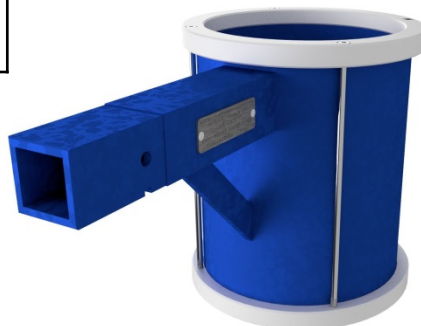
Part Number	D3010
Length	12 in
Height	12 in
Width	3 in
Weight	25 lb
Material	Hardcoat anodized aluminum; Stainless steel protective lens cover
Lens Material	Polycarbonate

#### **Physical – Detachable Cable**

Length	100-ft
Shielded	Yes
Water resistance	Yes; to 2500 PSI
Jacket Material	Polyurethane, low-smoke, zero-halogen

#### **Physical – Guide Stud Mount**

Length	17 in
Width	9 in
Height	12 in
Weight	9 lb
Material	Aluminum; nylon

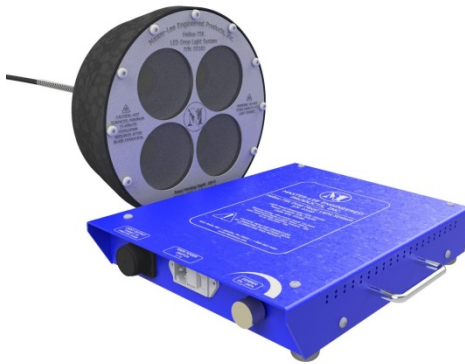


#### **Lighting/Electrical**

Operating Voltage	90~305 VAC, 50~60Hz
Size/Weight (Power Console)	13" x 11" x 3"; 12 lb
Current @ 100% Power	Up to 7.0 Amps
Light Output	Up to 110,000 Lumens
Light Color Temperature	5000K (white light)
LED Life	50,000 hours (>70% lumen output)
Radiation tolerance	Approved for extended use in Reactor Core & near fuel assemblies
Waterproof depth rating	100-ft
Dimming	100-10% manual; 100-50% auto (temperature based)
Light Panel positions	0-90 degrees (down from horizontal)
Operating temperature (°F)	165 (max. in-air); ~135 (in water)
Power Factor %	98
LED Efficacy (@ 85C)	159 lumens/watt
LED Flux (@85C)	100,300 lumens
FME Equipped	Yes
Protection	Thermal Overload; Short Circuit; Over Voltage; Fuse
Warranty	2-Year; Limited; Parts replacement

# MASTER-LEE ENGINEERED PRODUCTS INC.

## *The Master-Lee Engineered Products (MEPI) LED Drop Floodlight – Helios 75K*



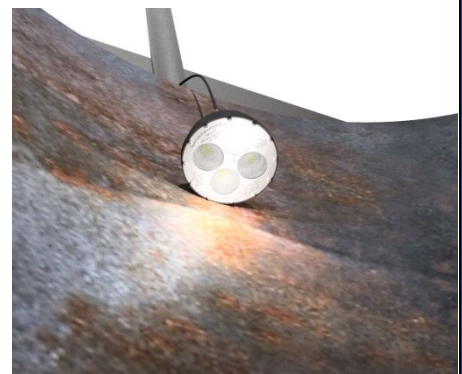
*LED Drop Floodlight – Helios 75K  
P/N #D3183*

Providing up to **78,000 lumens** of dispersed, white light using the latest in LED technology, the **Helios 75K™** is best suited for lighting large **underwater** areas, such as reactor cores and spent fuel pools, or **in-air** areas such as refueling cavities. The **Helios 75K™** has been engineered to be **compact, lightweight, rugged**, yet versatile to be quickly deployed to nearly any working environment underwater or in open air to compete with its big brother, the **Helios 100K™ Floodlight**, for center stage. Designed to operate at **depths to 150-ft** and within close proximity to irradiated fuel assemblies, the **Helios 75K™** is the ideal solution to **illuminate reactor cores** for video inspections or fuel movement. Such a high light output gives our customers the flexibility to do more with less, as the **Helios 75K™** can provide the illumination of two or more traditional (tungsten/quartz halogen) lights. This not only reduces the amount of required electrical outlets, as two **Helios 75K™** lights operate on one 15-Amp circuit, but also the amount of time spent positioning lights within the core is reduced. Additionally, incorporating LED lighting technology provides **thousands of maintenance-free operating hours**, reducing your re-lamp, installation, and removal times.



Master-Lee would like to introduce our **brightest “drop-style” LED light** across our product line, the **Helios 75K™**. Designed to be as powerful as a large floodlight but compact and rugged enough to play the role of an area drop light, the **Helios 75K™** shines brightly in any environment. **In-air or underwater**, this **dimable** LED light offers more than enough light for illuminating large areas.

*The **Helios 75K** weighs under 15 pounds (5 pounds in water) for easy, manual installation/removal by its strain-relief detachable cable.*



*For additional information  
contact MEPI at:*

**800/537 6007-724/537 6002**

**FAX 724/805 0079**

**MEPI**

**5631 Route 981**

**Latrobe, PA 15650**

[www.masterlee.com](http://www.masterlee.com)

[Mepi-sales@masterlee.com](mailto:Mepi-sales@masterlee.com)



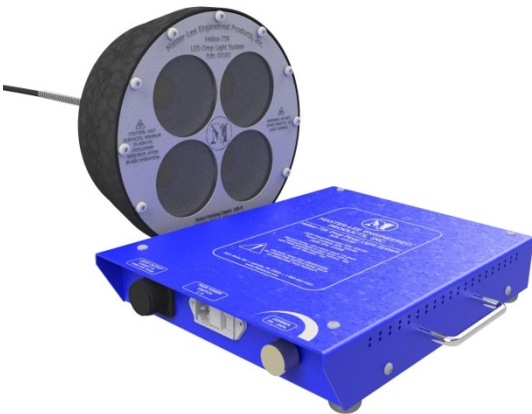
H  
E  
L  
I  
O  
S  
  
7  
5  
K  
  
F  
L  
O  
O  
D  
L  
I  
G  
H  
T



# MASTER-LEE ENGINEERED PRODUCTS INC.

## *LED Drop Floodlight – Helios 75K* *Technical Specifications*

### Part Number D3183 – Helios 75K Light and Power Console Package



Physical – Panel Light	
Part Number	D3183
Length	12 in
Height	12 in
Width	3 in
Weight	13 lb
Material	Aluminum; Stainless steel protective lens cover
Lens Material	Polycarbonate

Physical – Detachable Cable	
Length	100-ft
Shielded	Yes
Water resistance	Yes; to 2500 PSI
Jacket Material	Polyurethane, low-smoke, zero-halogen

Lighting/Electrical	
Operating Voltage	90~305 VAC, 50~60Hz
Current @ 100% Power	Up to 5.0 Amps
Size/Weight (Power Console)	13" x 11" x 3"; 12 lb
Light Output	Up to 78,000 Lumens
Light Color Temperature	5000K (white light)
LED Life	50,000 hours (>70% lumen output)
Radiation tolerance	Approved for extended use in Reactor Core & near fuel assemblies
Waterproof depth rating	100-ft
Dimming	100-10% manual; 100-30% auto (temperature based)
Light Panel positions	Vertical hanging (custom brackets available)
Operating temperature (°F)	165 (max. in-air); ~135 (in water)
Power Factor %	98
LED Efficacy (@ 85C)	152 lumens/watt
LED Flux (@85C)	70,900 lumens
FME Equipped	Yes
Protection	Thermal Overload; Short Circuit; Over Voltage; Fuse
Warranty	2-Year; Limited; Parts replacement



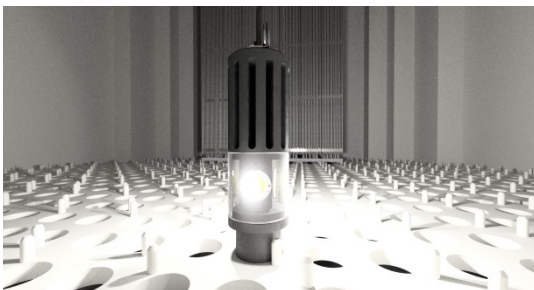
# MASTER-LEE ENGINEERED PRODUCTS INC.

*The Master-Lee Engineered Products (MEPI) LED Helios-75K CoreLite*



*LED Helios-75K CoreLite  
P/N #D3242*

Providing up to **78,000 lumens** of dispersed, white light using the latest LED technology, the **Helios 75K™ CoreLite** is best suited for lighting the reactor core in support of fuel movement and video inspection services operations. The **Helios 75K™ CoreLite** has been engineered to be **compact, lightweight, rugged**, and is specially equipped with a custom mounting pin to position itself securely in a flow hole of the reactor vessel core plate. The ease of positioning the light and its intense light output permits fewer moves during critical path times, ultimately **saving time**. Designed to operate at **depths to 100-ft** and within close proximity to irradiated fuel assemblies, the **Helios 75K™ CoreLite** is the ideal solution to **illuminate reactor cores**. Providing a bright, reliable light source gives our customers the flexibility to do more with less, as the **Helios 75K™ CoreLite** can provide the illumination of two or more traditional (tungsten/quartz halogen) lights. Additionally, incorporating LED lighting technology provides **thousands of operating hours**, reducing your re-lamp, installation, and removal times. Maintenance is limited to replacement of the lens as required due to radiation exposure.



Master-Lee would like to introduce our **brightest area “drop-style” LED light** across our product line, the **Helios 75K™ CoreLite**. Designed to be as powerful as a large floodlight, but compact and rugged enough to play the role of an area drop light, the **Helios 75K™ CoreLite** shines brightly in any environment. **In-air or underwater**, this **dimmable LED light** offers more than enough light for illuminating large areas.

*The **Helios 75K CoreLite** weighs just 10 pounds (5 pounds in water) for easy, manual installation/removal by its strain-relief detachable cable.*



*For additional information  
contact MEPI at:*

**800/537 6007-724/537 6002**

**FAX 724/805 0079**

**MEPI**

**5631 Route 981**

**Latrobe, PA 15650**

[www.masterlee.com](http://www.masterlee.com)

[Mepi-sales@masterlee.com](mailto:Mepi-sales@masterlee.com)



H  
e  
l  
i  
o  
s  
  
7  
5  
K  
  
C  
o  
r  
e  
L  
i  
t  
e

# MASTER-LEE ENGINEERED PRODUCTS INC.

## *LED Helios 75K CoreLite Technical Specifications*

### Part Number D3242 – Helios 75K CoreLite System



Physical –Light Head	
Part Number	D3245
Length	19 in
Diameter	4 in
Width	n/a
Weight	10 lb
Material	Aluminum (hard anodized)
Lens Material	Polycarbonate

Physical – Detachable Cable	
Length	100-ft
Shielded	Yes
Water resistance	Yes; to 2500 PSI
Jacket Material	Polyurethane, low-smoke, zero-halogen

Lighting/Electrical	
Operating Voltage	90~305 VAC, 50~60Hz
Current @ 100% Power	Up to 5.0 Amps
Size/Weight (Power Console)	13" x 11" x 3"; 12 lb
Light Output	Up to 78,000 Lumens
Light Color Temperature	5000K (white light)
LED Life	50,000 hours (>70% lumen output)
Radiation tolerance	Approved for extended use in Reactor Core & near fuel assemblies
Waterproof depth rating	100-ft
Dimming	100-10% manual; 100-30% auto (temperature based)
Light Head positions	Vertical hanging; Core plate flow hole mounting
Operating temperature (°F)	165 (max. in-air); ~135 (in water)
Power Factor %	98
LED Efficacy (@ 85C)	152 lumens/watt
LED Flux (@85C)	70,900 lumens
FME Equipped	Yes
Protection	Thermal Overload; Short Circuit; Over Voltage; Fuse
Warranty	2-Year; Limited; Parts replacement



# MASTER-LEE ENGINEERED PRODUCTS INC.

*The Master-Lee Engineered Products (MEPI)  
LED Area Drop Light is built to serve industries worldwide.*



*LED Area Drop Light - Part# D2742*

The MEPI **LED Area Drop Light** is an addition to our popular underwater lighting options which are commonly used throughout the nuclear industry for fuel movement, fuel inspection, reactor cavity and spent fuel pool temporary lighting, or wherever localized underwater illumination is needed.

This particular **LED Area Drop Light** is designed and manufactured to conform with the standards for products sold within the European Economic Area (EEA). This product bears the CE marking as it has been tested to all applicable EC directives. Using LED technology coupled to a highly efficient heatsink, it can be energized both underwater (100% output @ 42,000 lumens) or out of the water (~20% Output @ 10,000 lumens).

The standard, permanently attached 100-ft neoprene power cord is equipped with strain reliefs for added strength and durability.

The MEPI **LED Area Drop Light** was tested at Pennsylvania State University (Breazeale Nuclear Reactor) for 8 months prior to receiving approval for field use, accumulating a total of 35.91 Mrad without failure.

*Durable, reliable,  
and extremely bright  
(42,000 lumens with  
4000K color  
temperature) - best  
describes the MEPI  
**LED Area Drop  
Light**. The machined  
body of the light is  
constructed of  
hard coat anodized  
aluminum. The  
frosted globe is made  
of high strength  
polycarbonate.*

*MEPI's Underwater  
LED Area Drop  
Light is the  
logical and practical  
solution to your  
underwater lighting  
requirements.*



*For additional information  
contact MEPI at:*

**800/537 6007-724/537 6002**

**FAX 724/805 0079**

**MEPI**

**5631 Route 981**

**Latrobe, PA 15650**

[www.masterlee.com](http://www.masterlee.com)

[Mepi-sales@masterlee.com](mailto:Mepi-sales@masterlee.com)



L  
E  
D  
  
A  
R  
E  
A  
  
D  
R  
O  
P  
  
L  
I  
G  
H  
T



# MASTER-LEE ENGINEERED PRODUCTS INC.

## *LED Area Drop Light*

### Part Number D2742 – LED Light and Power Supply Package



#### Physical - Light

Part Number	D2743
Length	11.5 in
Outside Diameter	7.25 in
Weight	16 lb
Cord Length	95 ft

#### Physical – Power Supply Enclosure

Part Number	D2744
Length	16 in
Width	13.25 in
Height	3.5 in
Weight	15.5 lb
Cord Length	6.0 ft

#### Lighting

Type	LED
100% Power Light Output	42,000 Lumens
~20% Power Light Output – For use “In Air”	10,000 Lumens
Color Temperature	5000K
Beam Angle	115-deg
Color Rendering Index (CRI)	80

#### Electrical

Electrical Rating	100-230V, 50/60Hz, 9.5A
Power Consumption – @ 100% Power (120VAC circuit)	300 Watts
Current – @ 100% Power (120VAC Circuit)	2.5 Amps
Power Consumption – @ ~20% Power (120V circuit)	60 Watts
Current – Reduced Power	0.5 Amp
Cable Current Rating	15 Amps
Cable Voltage Rating	600 Volts

#### Material

Body / Heatsinks / Collar / Back	Hard Coat Anodized Aluminum
Rods	Stainless Steel
Globe (Part Number – D2834)	Polycarbonate - Frosted
Globe O-Ring Seals	Buna-N
Power Supply Enclosure	Aluminum

#### CE Compliance

Fully complies with all applicable European Union Directives including:

**Low Voltage – 2014/35/EU**

**EMC Directive – 2014/30/EU**

**ROHS2 Directive – 2014/65/EU (by exemption)**

# MASTER-LEE ENGINEERED PRODUCTS INC.

*The Master-Lee Engineered Products (MEPI) Dimmable Underwater  
LED PencLite*



With its small size and extremely bright output (20,000 lumens), **MEPI's Dimmable Underwater LED PencLite** is designed to meet our customers high standards. The machined body is constructed of

6061-T6 aluminum with a hard coat blue anodize. The 100' neoprene power cord is firmly connected to the body by a strain relief, which ensures strength and durability. The frosted globe is made of high strength shatter resistant polycarbonate.

MEPI's family of underwater lights is commonly used throughout the nuclear industry. The **Dimmable Underwater LED PencLite** is ideal for shroud inspections, internals inspections, in-vessel video inspections (IVVI) and can be used for many other applications where space and lighting is limited.

This long-life lightweight compact design provides greatly improved lighting over the short-lived incandescent lights. Please refer to our specification sheet for more information.

*MEPI's Dimmable Underwater LED PencLite is the solution where lighting and space is limited.*



For additional information  
contact MEPI at:

800/662-4493-724/539-8060

FAX 724/532-5501

MEPI

5631 Route 981

Latrobe, PA 15650

[www.masterlee.com](http://www.masterlee.com)

[Mepi-sales@masterlee.com](mailto:Mepi-sales@masterlee.com)



U  
N  
D  
E  
R  
W  
A  
T  
E  
R  
  
L  
E  
D  
  
P  
E  
N  
C  
I  
L  
I  
T  
E

# MASTER-LEE ENGINEERED PRODUCTS INC.

## *Underwater, Dimmable LED PencLite*

### Physical – Light

Part Number	D2893
Length	10 in
Outside Diameter	1.75 in
Weight	1 lb.
Cable Length	100 ft.
Body Material	Aluminum
Globe Material	Polycarbonate
O-Ring Seal	Silicone



### Physical –Power Supply Console

Part Number	D2894
Length	13.25 in
Width	6.5 in
Height	2 in
Weight	4.5 lbs.
Cord Length	6 ft.
Material	Aluminum



### Lighting/Electrical

Operating Voltage	100~230 VAC, 50~60Hz
Current @ 100% Power	1.15 Amps
100% Power Light Output	20,000 Lumens