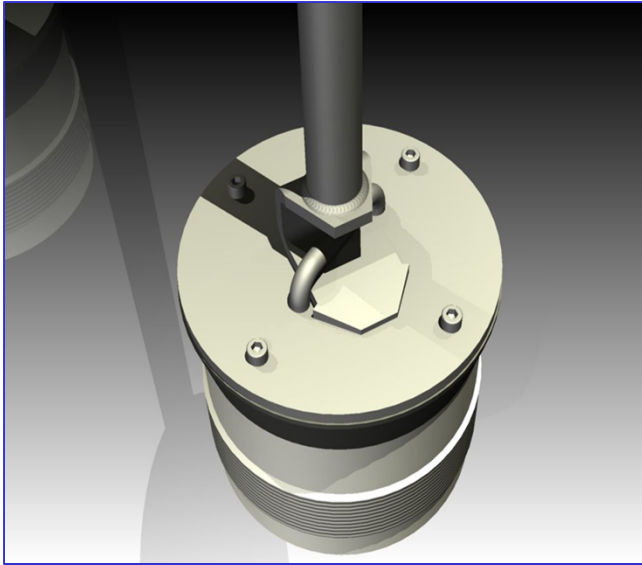


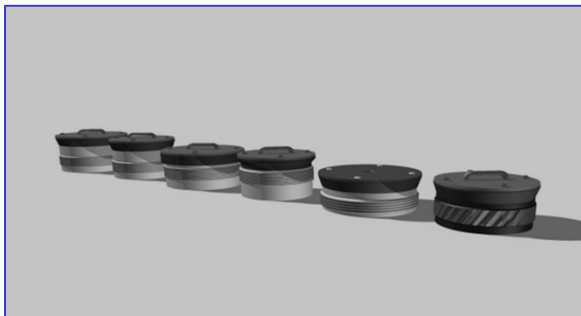
# MASTER-LEE ENGINEERED PRODUCTS INC.

*The Master-Lee Engineered Products Reactor Head Stud Hole Plugs provide an effective and reliable seal to prevent water or debris from entering the stud hole during refuel outages.*



*Stud Hole Plug - Part# D0008 / D0145*

*What makes this plug so unique is the ease of installation, removal and virtual NO maintenance reliability.*



*For additional information contact Master-Lee EPI at:*

**800/537-6007**

**724/537-6002**

**FAX 724/537-9285**

Master-Lee EPI

5631 Route 981

Latrobe, PA 15650

[www.masterlee.com](http://www.masterlee.com)

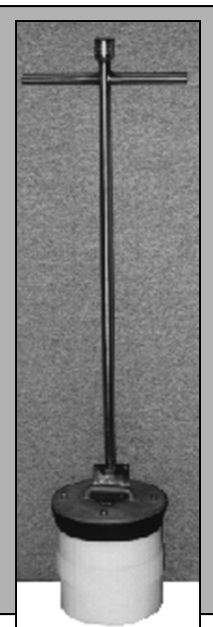


Made of high strength Cast 6 Nylon with a formed neoprene gasket, the lightweight plug is very durable and easily cleaned.

The plug installs and is removed with minimal effort using the T-handle tool. The tool's 'easy align' connector attaches to the welded stainless steel top plate of the stud hole plug. The rubber gasket is lightly coated with an approved lubricant (water, vacuum grease, etc.) to ensure an absolute seal and facilitate quick removal.

The patented design of the EPI Stud Hole Plug offers an excellent seal. The threaded configuration precludes sticking due to thermal expansion and also prevent any damage to the stud hole threads. Installation and removal is accomplished using a simple U-bolt type connector and T-handle tool.

*The cost efficient EPI Stud Hole Plug out lasts and outperforms other plugs. Call your Master-Lee EPI representative for more information and a list of references.*

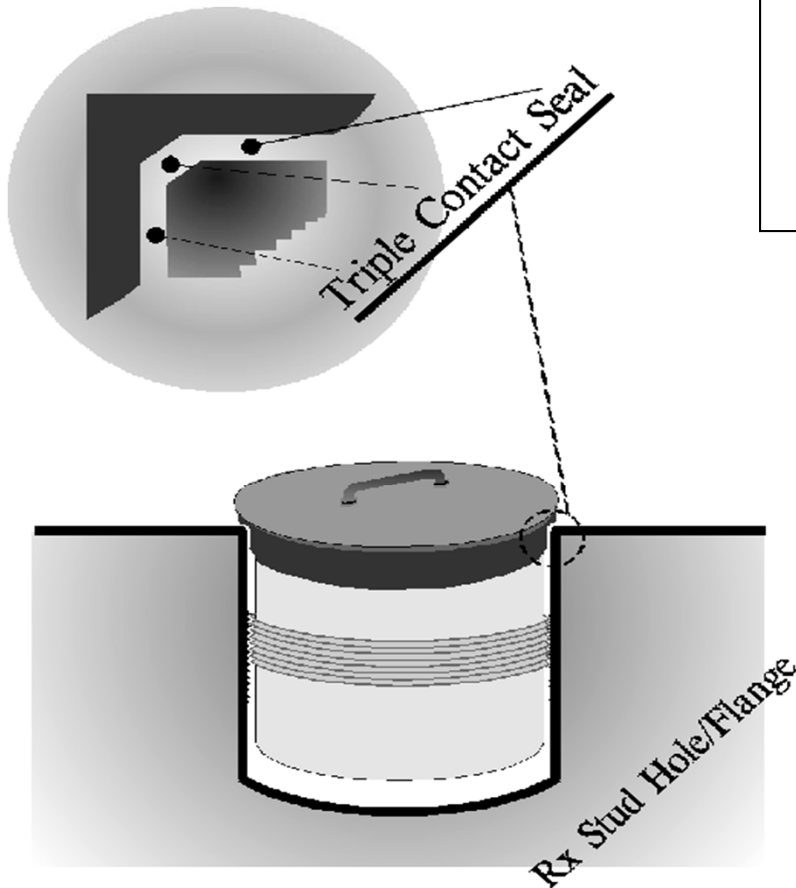


R  
E  
A  
C  
T  
O  
R  
  
H  
E  
A  
D  
  
S  
T  
U  
D  
  
H  
O  
L  
E  
  
P  
L  
U  
G  
S

# MASTER-LEE ENGINEERED PRODUCTS INC.

The Stud Hole Plugs are shipped and stored in this Type 7A qualified shipping container.

Egg crate compartments ensure minimal contact with the actual plug threads ensuring years of service.

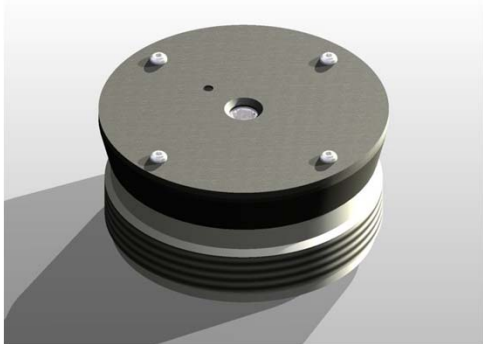


The following are a few sites using the Master-Lee Stud Hole Plugs:

Salem  
Calvert Cliffs  
D.C. Cook  
H.B. Robinson  
Indian Point  
Kewaunee  
Seabrook  
Waterford  
Wolf Creek  
Songs  
ST. Lucie

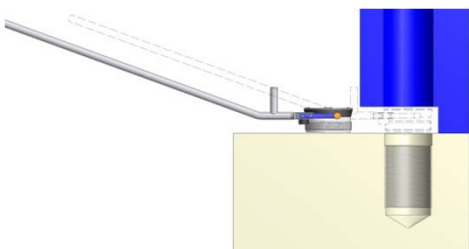
# MASTER-LEE ENGINEERED PRODUCTS INC.

The patented design of the AP-1000 EPI Stud Hole Plug offers an excellent seal. The threaded configuration precludes sticking due to thermal expansion and also prevent any damage to the stud hole threads.



AP-1000 Stud Hole Plug - Part# C16521

Total plug height = 3.69".  
Overall diameter of 7.25".  
Nylon insert has 7.000-4 modified thread.  
Standard 7" seal.  
Internal hex socket for handling and installing (low profile).  
Uses standard 1/2" hex bit.  
Blunt start on threads.  
Weight = 6.7 lbs.

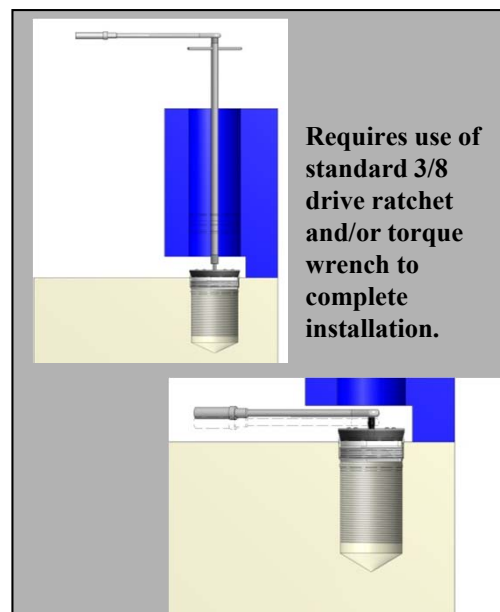


Aluminum handle tool design for placing plug between vessel flange and head flange using spring steel to "snap" around the plugs. Utilizes rubber bumpers to protect surfaces w/stopper to provide location reference.  
Weight = 3.2 lbs.

Made of high strength Cast 6 Nylon with a formed neoprene gasket, the lightweight plug is very durable and easily cleaned.

The rubber gasket is lightly coated with an approved lubricant (water, vacuum grease, etc.) to ensure an absolute seal and facilitate quick removal.

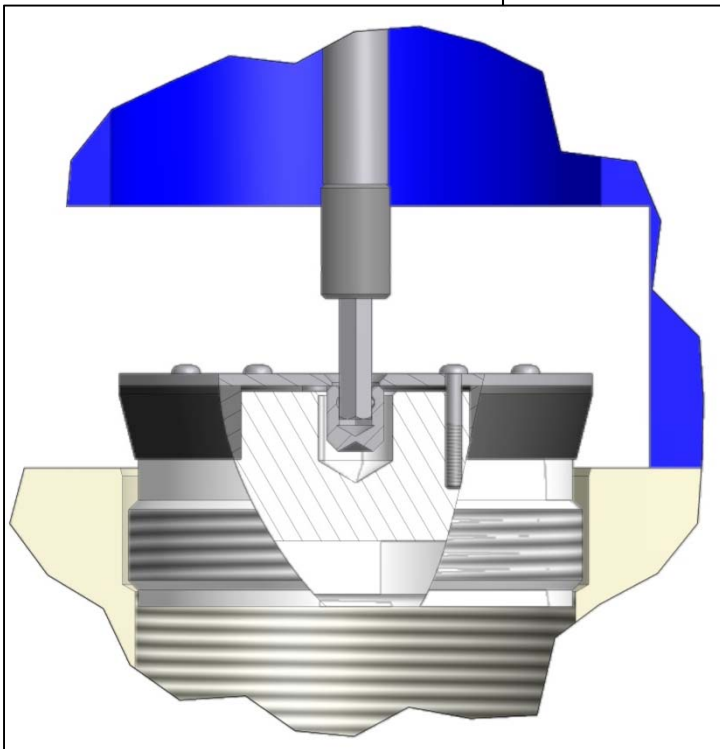
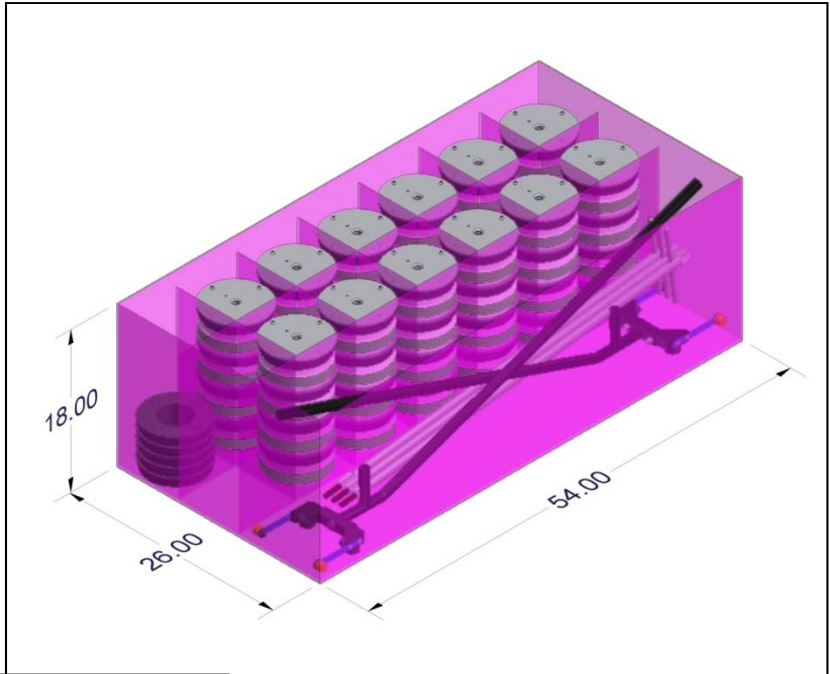
Installation and removal is accomplished using the simple installation tools. The tool's 'easy align' connector attaches to the internal hex socket in the stainless steel top plate of the stud hole plug. A standard drive ratchet and a torque wrench is used to complete installation.



R  
E  
A  
C  
T  
O  
R  
  
H  
E  
A  
D  
  
S  
T  
U  
D  
  
H  
O  
L  
E  
  
P  
L  
U  
G  
S

# MASTER-LEE ENGINEERED PRODUCTS INC.

The Stud Hole Plugs are shipped and stored in this Type 7A qualified shipping container. Egg crate compartments ensure minimal contact with the actual plug threads ensuring years of service.



*For additional information  
contact Master-Lee EPI at:*

**800/537-6007**

**724/537-6002**

**FAX 724/537-9285**

Master-Lee EPI

5631 Route 981

Latrobe, PA 15650

[www.masterlee.com](http://www.masterlee.com)

