

MASTER-LEE ENGINEERED PRODUCTS INC.

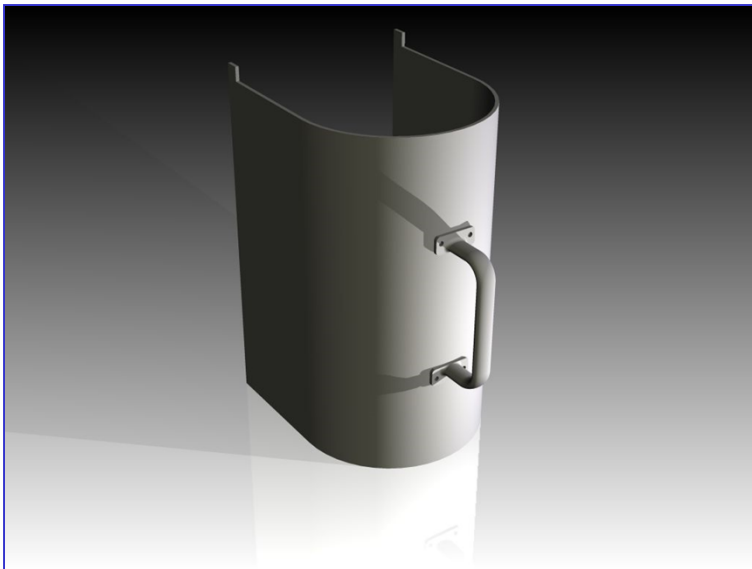
Master-Lee Engineered Products offers a Reactor Head Nut support which is used for reactor head stud removal and installation.

The lightweight high strength (6061-T6 aluminum) “mailboxes” provide a resting support for individual reactor head studs once they are turned out of the stud hole but remain in the head reactor flange.

Designed primarily for 6 or 7 inch studs, the “mailboxes” easily slide into position between the reactor flange and the stud nut. They securely hold (in a raised position approximately 12-16”) a turned-out stud such that the bottom of the stud is completely out of the stud hole and protected within the head flange.

The simplistic EPI “mailbox” adds efficiency to stud removal and installation:

- * Facilitates stud and nut removal as a one-step operation
- * Minimizes the potential for stud thread and stud hole thread damage
- * Improves FME control/accountability



**performance
safety
cost-efficiency**

For improved stud removal/installation performance, safety and cost-efficiency, choose the EPI Stud Nut Support “Mailbox”.

For additional information contact Master-Lee EPI at:

800/537-6007

724/537-6002

FAX 724/537-9285

Master-Lee EPI

5631 Route 981

Latrobe, PA 15650

www.masterlee.com



R
E
A
C
T
O
R

H
E
A
D

S
T
U
D

N
U
T

S
U
P
P
O
R
T