

MASTER-LEE ENGINEERED PRODUCTS INC.

The Master-Lee Engineered Products Flux Thimble Tube Starter Tools offers you fast and efficient removal and installation of Flux Thimble Tubes.

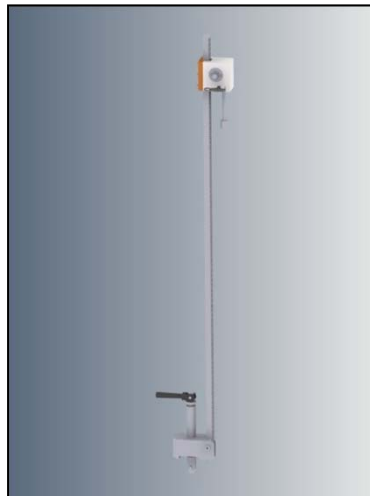
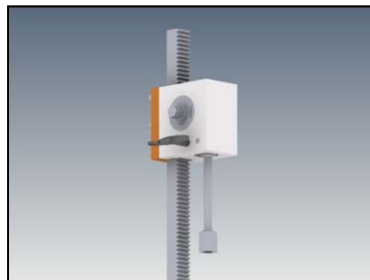


Master-Lee Engineered Products Inc. has come up with two more options for pushing and pulling the flux thimbles. The first option is a hydraulic tool that is capable of pushing or pulling the flux thimble one foot. This tool locks to the seal table similar to the Master-Lee Jacking Tool. The picture on the left is of the hydraulic tool. Which consists of the tool, hoses, fittings, hydraulic oil, and a manual hydraulic pumper.

Both tools are designed to be threaded to the end of the disassemble flux thimble.

The Master-Lee Jacking Tool then can be used to pull the thimble to the desired height after the initial one foot pull.

The other design is a manual tool that utilizes a ratchet to raise and lower the flux thimble three feet through a rack and pinion setup. This tool also locks to the seal table similar to the Master-Lee Jacking Tool. The picture of the manual tool is on the right.



*For additional information
contact Master-Lee EPI at:*

800/537-6007

724/537-6002

FAX 724/537-9285

Master-Lee EPI

5631 Route 981

Latrobe, PA 15650

www.masterlee.com



F
L
U
X

T
H
I
M
B
L
E

T
U
B
E

S
T
A
R
T
E
R

T
O
O
L