

MASTER-LEE ENGINEERED PRODUCTS INC.

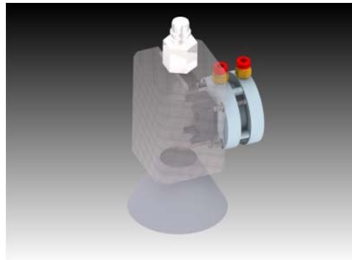
Master-Lee Engineered Products provides an easy to use set of tools for the removal disposition of flux thimble ... the Flux Thimble Removal Tool.

Historically, failure of flux thimbles has caused leaks of reactor coolant into the chamber of the flux thimble where the detector resides. This failure is primarily caused by cross flow at the lower core plate which induces a vibration.

The EPI system removes the flux thimbles from the reactor side to remove 30 foot of the highly activated tubing. That 30 foot section will then be segmented underwater for transfer to the spent fuel pool or high level waste shipping/storage container. The remaining section of flux thimble is also removed and sectioned for low level waste disposal.

Offered as a complete system or individual tools, the EPI Flux Thimble Removal System is a versatile system that can be incorporated into your standard inventory of maintenance tools. The basic system consists of the following:

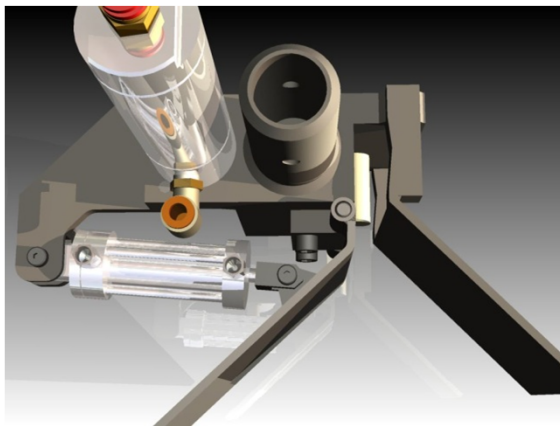
- 1 Camlock Grapple
- 1 Deluxe AirGrips
- 1 Hydraulic Cutter System
- 1 Funnel Guide Tool
- 1 Operating Manual



Guide Funnel Tool

For complete flux thimble maintenance services, Master-Lee EPI offers, through their affiliate Master-Lee Energy Services, experienced teams of field service specialists trained in flux thimble removal, seal replacement, guide tube eddy current inspection, guide tube/path flushing, and maintenance advisory services.

Optionally, we recommend our Fuel Assembly (size) Debris Canisters for transferring the segmented flux thimbles to the spent fuel pool.



Camlock Grapple



F
L
U
X

T
H
I
M
B
L
E

R
E
M
O
V
A
L

T
O
O
L

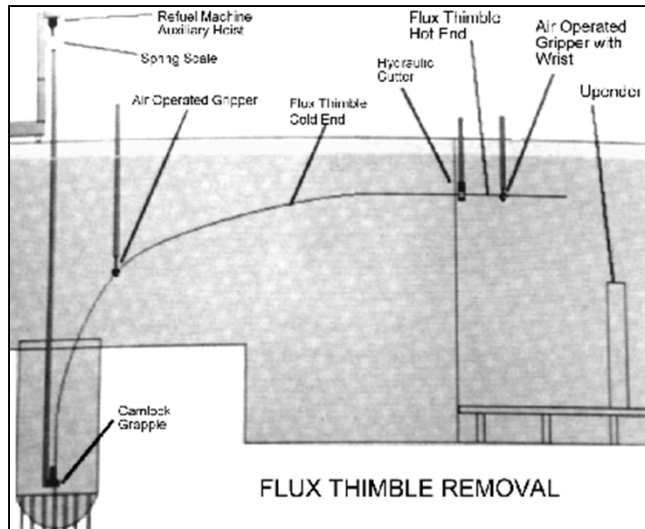
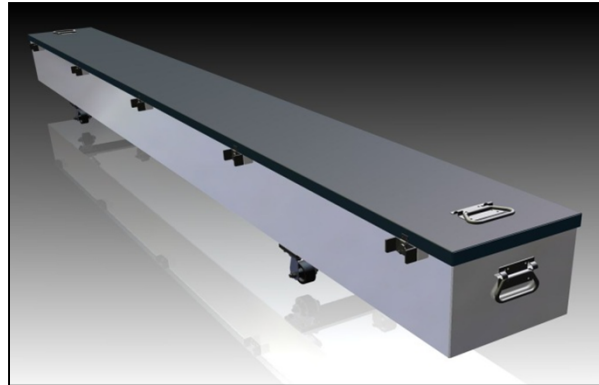
MASTER-LEE ENGINEERED PRODUCTS INC.

Flux Thimble / ICI's Removal Systems

DELUXE AIRGRIPS



AIRGRIPS STORAGE BOX



HYDRAULIC CUTTER SYSTEM

*For additional information
contact Master-Lee EPI at:*

800/537-6007

724/537-6002

FAX 724/537-9285

Master-Lee EPI

5631 Route 981

Latrobe, PA 15650

www.masterlee.com

