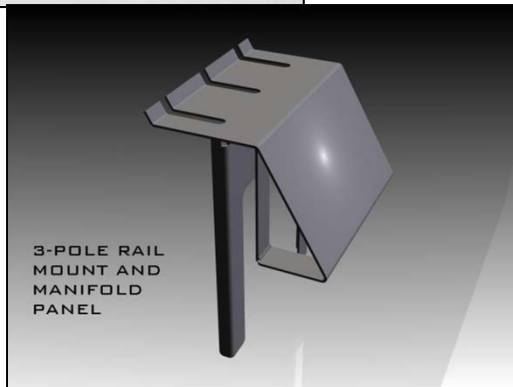
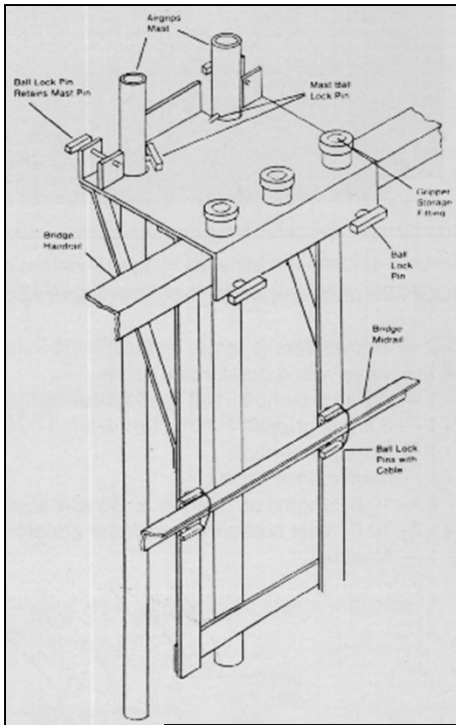


# MASTER-LEE ENGINEERED PRODUCTS INC.

*The Master-Lee Engineered Products Inc. (Ball-Lock) & (J-Lock) AirGrip Handrail Platforms are a portable storage work platform used primarily for staging the AirGrip systems*



*For additional information  
contact Master-Lee EPI at:*

**800/537-6007**

**724/537-6002**

**FAX 724/537-9285**

Master-Lee EPI

5631 Route 981

Latrobe, PA 15650

[www.masterlee.com](http://www.masterlee.com)



Designed for temporary attachment to the (refuel or spent fuel) bridge, the EPI AirGrips Handrail Platform provides the operator with a functional fixture to conveniently store the AirGrips masts and gripper heads. Weighing less than 10 lbs., the aluminum fixture is easily installed by one person.

The Handrail Platform is capable of staging two assembled AirGrips masts. Receptacle quick disconnects (refer to the sketch) are provided for temporary storage of the various gripper heads.

The Handrail Platform rests on your bridge handrail and is secured using quick-connect ball locks and lanyards. When ready, the platform quickly and easily moves up and down the bridge railing. No holes or modifications are needed to secure this platform to your bridge.

The Platform fits most bridge handrail configurations - and when requested - Master-Lee EPI engineers can design and build custom handrail systems (including our video monitor handrail stand) to meet your particular staging needs.

A  
I  
R  
G  
R  
I  
P  
S  
  
H  
A  
N  
D  
R  
A  
I  
L  
  
P  
L  
A  
T  
F  
O  
R  
M