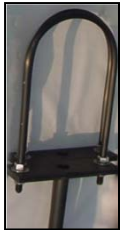


MASTER-LEE ENGINEERED PRODUCTS INC.

The Deluxe and Economy Ball-Lock AirGrips Packages



Large Bail
Part# D1473

Small 6" Lift Bail
Part# D1489



Tool Actuator Air Cylinder (Small & Large)
Part# D1486 / D1483

The assembled package can be operated, including actuation of the air valve, by one person. Unlike other manufacturers, Master-Lee Engineered Products utilizes 1½ inch diameter aluminum tubing which offers greater stability for less weight. Mast stability is also increased from the tight-fitted slip joints, enabling operators to perform delicate maneuvers.

The **DeluxeGrips** package enables 2 operators to work simultaneously. The package consists of:

- 2 — Control Valve & Reg. Assy.
- 2 — .25 in. x 100 ft. Air Hoses
- 4 — Air Cylinders (2 lg, 2 sm)
- 1 — 3 Finger Gripper
- 1 — Small Pliers Head
- 1 — Large Pliers Head
- 1 — Wide Jaw Head
- 1 — C-Clamp Head
- 1 — Needle Nose Head
- 1 — ClamShell Head
- 8 — 10 ft. lengths of 1.5 in. x .06 Wall Aluminum Masts
- 2 — 5 ft. Mast with Lifting Bail
- 2 — 10 ft. Bottom Mast Sections



Clamshell
Part# D2175



L-Hook Tool



Small Needle Nose Pliers
Part# D2177



RodGrips

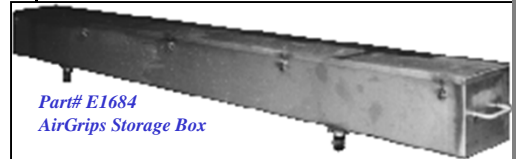


Part# D0251
Filter Removal Tool

EPI offers a wide variety of attachments, each one initially designed for a specific application.

The small and large **ViseGrips** are legendary, known for their versatility. NeedleNose, ClamShell, FuelRod grips and many more are available.

When our standard offerings don't meet the application, EPI will custom build Grips based on your specifications.

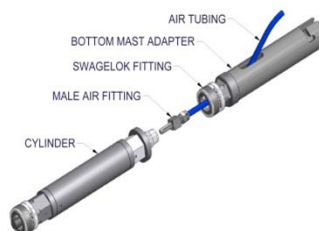


Part# E1684
AirGrips Storage Box

The **EconoGrips** consists of:

- 1 — Control Valve & Reg. Assy.
- 1 — .25 in. x 100 ft. Air Hoses
- 2 — Air Cylinders (1 large, 1 small)
- 1 — 3 Finger Gripper
- 1 — Large Pliers Head
- 1 — Needle Nose Head
- 4 — 10 ft. lengths of 1.5 in. x .06 Wall Aluminum Masts
- 1 — Mast Bail
- 1 — 10 ft. Bottom Mast Sections

Large (8") and Small (5") Pliers
Part# D2174 / D2176



Wide Jaw Grip - Part# D2178



C-Clamp
Part# D2179

